

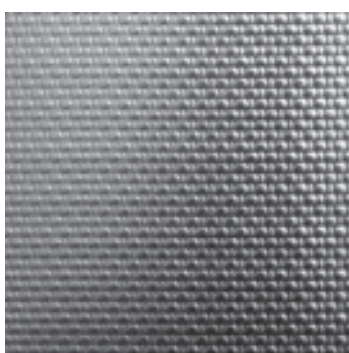
Blachy dekoracyjne

Blachy dekoracyjne według EN 10088-2 w gatunku OH18N9 [1.4301]. Tolerancje według EN ISO 9445 [EN10259]. Dostępne powierzchnie: kwadraty [M21], romby [M22], len/plótno [M25], 5WL [M20], skóra [M27] i inne.

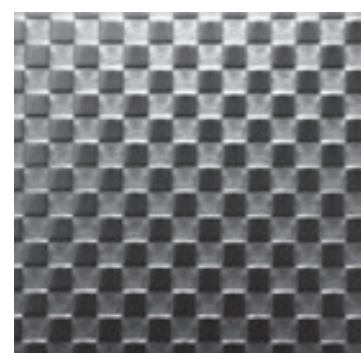
GRUBOŚĆ	FORMAT			
	1000x2000	1250x2500	1250x3000	1500x3000
0,8	M21, M22, M25, M27, 5WL			
1	5WL	M21, M27, 5WL		5WL
1,25	5WL	5WL		
1,5	5WL	M21, M22, M25, M27, 5WL	5WL	M21, M25, M27, 5WL
2	5WL			



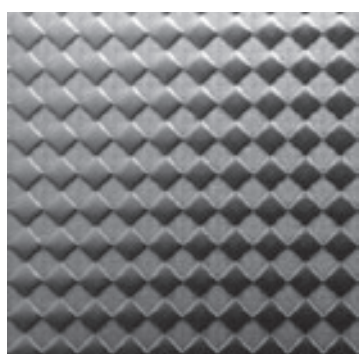
Szlif 240, suchy



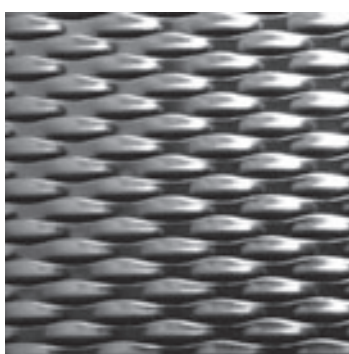
Len / plótno [M25]



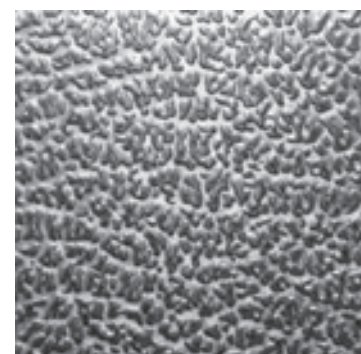
Kwadraty [M21]



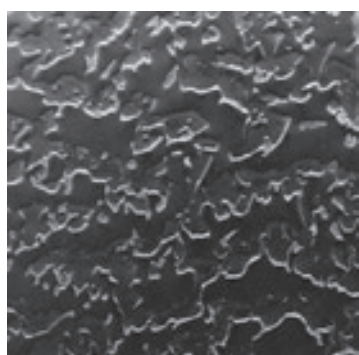
Romby [M22]



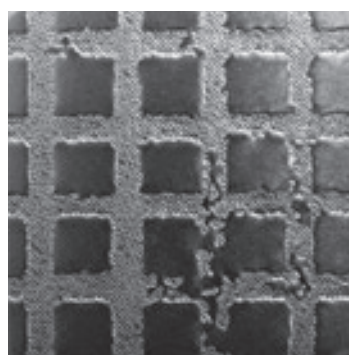
5WL [M20]



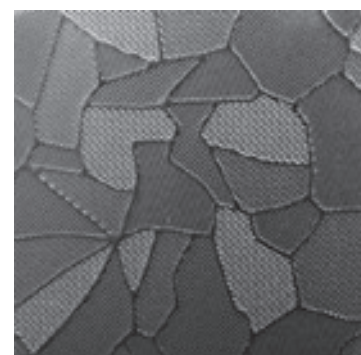
Skóra [M27]



Mróz na szybie [M23]



Kostka brukowa [M26]



Mozaika [M24]