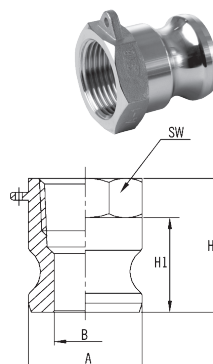


## Adapter z gwintem wewnętrznym (Typ A)

DN	CALE	A mm	B mm	H mm	H1 mm	SW mm
15	1/2"	24,3	14,4	38,0	25,0	25,5
20	3/4"	32,0	21,2	38,0	28,0	33,0
25	1"	36,7	23,8	46,5	33,5	41,0
32	1 1/4"	45,5	28,6	55,0	40,0	48,0
40	1 1/2"	53,4	36,0	58,5	42,5	56,0
50	2"	63,0	45,5	62,3	47,5	67,5
65	2 1/2"	75,7	56,4	68,0	50,0	83,0
80	3"	91,5	73,5	70,0	51,0	96,5
100	4"	119,5	100,0	76,0	53,0	124,0

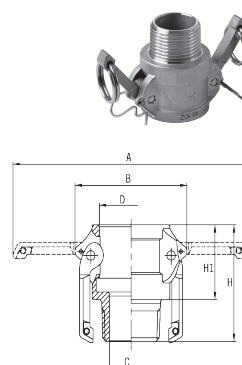
Wykonanie: odlew ze stali 316  
[1.4408]. EN10241:2000.  
Gwint wewn BSP wg ISO 228-1G.



## Szybkozłączka z gwintem zewnętrznym (Typ B)

DN	CALE	A mm	B mm	C mm	D mm	H1 mm	H mm
15,0	1/2"	107,0	48,7	14,8	25,1	31,0	48,0
20,0	3/4"	115,0	57,0	21,2	32,4	30,0	49,0
25,0	1"	137,0	65,6	25,0	37,3	39,0	61,0
32,0	1 1/4"	183,0	77,0	28,0	46,0	46,0	68,0
40,0	1 1/2"	191,0	85,0	39,0	54,0	48,0	70,5
50,0	2"	201,0	96,0	50,0	63,7	53,0	78,7
65,0	2 1/2"	213,0	110,4	58,0	76,5	58,0	86,0
80,0	3"	267,0	133,0	73,2	92,2	58,0	89,0
100,0	4"	296,0	166,0	97,0	120,2	63,0	97,0

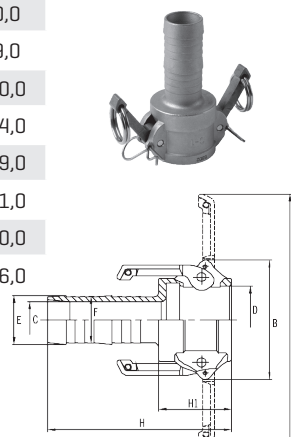
Wykonanie: odlew ze stali 316  
[1.4408]. EN10241:2000.  
Gwint wewn BSP wg ISO 7-1R



## Szybkozłączka z końcówką na wąż (Typ C)

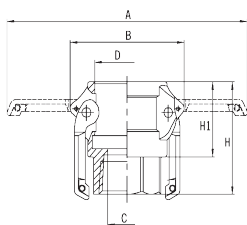
DN	CALE	A mm	B mm	C mm	D mm	E mm	H1 mm	H mm
15,0	1/2"	107,0	48,7	8,0	25,1	15,0	31,0	72,0
20,0	3/4"	115,0	57,0	13,6	32,4	20,7	30,0	80,0
25,0	1"	137,0	65,6	20,0	37,3	27,0	39,0	99,0
32,0	1 1/4"	183,0	77,0	25,8	46,0	33,9	46,0	110,0
40,0	1 1/2"	191,0	85,0	31,3	54,0	40,5	48,0	114,0
50,0	2"	201,0	96,0	43,8	63,7	52,0	53,0	129,0
65,0	2 1/2"	213,0	110,4	55,7	76,5	66,8	58,0	151,0
80,0	3"	267,0	133,0	68,0	92,2	79,0	58,0	160,0
100,0	4"	296,0	166,0	92,0	120,2	104,8	63,0	176,0

Wykonanie: odlew ze stali  
316 [1.4408].  
EN10241:2000.



## Szybkozłączka z gwintem wewnętrznym (Typ D)

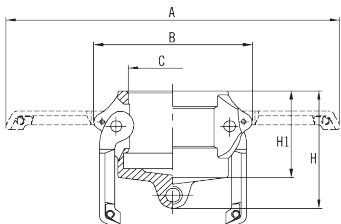
Wykonanie: odlew ze stali 316 [1.4408].  
EN10241:2000.  
Gwint wewn BSP  
wg ISO 7-1R



DN	CALE	A mm	B mm	C mm	D mm	H1 mm	H mm	SW mm
15,0	1/2"	107,0	48,7	17,4	25,1	31,0	49,0	25,5
20,0	3/4"	115,0	57,0	20,0	32,4	30,0	50,0	32,0
25,0	1"	137,0	65,6	26,0	37,3	39,0	60,0	38,5
32,0	1 1/4"	183,0	77,0	34,5	46,0	46,0	66,0	48,0
40,0	1 1/2"	191,0	85,0	40,0	54,0	48,0	705,0	55,5
50,0	2"	201,0	96,0	50,0	63,7	53,0	76,0	67,0
65,0	2 1/2"	213,0	110,4	61,0	76,5	58,0	82,0	82,0
80,0	3"	267,0	133,0	75,0	92,2	58,0	86,0	94,2
100,0	4"	296,0	166,0	100,0	120,2	63,0	92,0	127,0

## Szybkozłączka zaślepiająca (Typ DC)

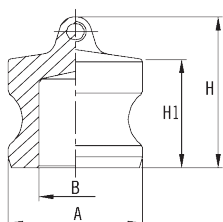
Wykonanie: odlew ze stali 316 [1.4408]. EN10241:2000.



DN	CALE	A mm	B mm	C mm	H1 mm	H mm
15,0	1/2"	107,0	48,7	25,1	30,0	40,0
20,0	3/4"	115,0	57,0	32,4	30,0	40,0
25,0	1"	137,0	65,6	37,3	39,0	53,0
32,0	1 1/4"	183,0	77,0	46,0	46,0	61,0
40,0	1 1/2"	191,0	85,0	54,0	48,0	64,0
50,0	2"	201,0	96,0	63,7	53,0	68,0
56,0	2 1/2"	213,0	110,4	76,5	58,0	82,0
80,0	3"	267,0	133,0	92,2	58,0	83,0
100,0	4"	296,0	166,0	120,2	63,0	93,0

## Końcówka zaślepiająca (Typ DP)

Wykonanie: odlew ze stali 316 [1.4408]. EN10241:2000.

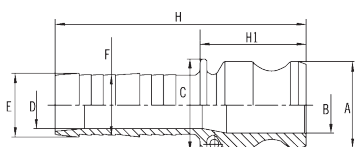


DN	CALE	A mm	B mm	H1 mm	H mm
15,0	1/2"	24,3	14,4	26,0	35,0
20,0	3/4"	32,0	21,2	25,0	36,0
25,0	1"	36,7	23,8	30,5	44,5
32,0	1 1/4"	45,5	28,6	37,7	52,7
40,0	1 1/2"	53,4	36,0	38,7	53,7
50,0	2"	63,0	45,5	42,8	57,8
56,0	2 1/2"	75,7	56,4	46,0	71,0
80,0	3"	91,5	73,2	46,0	76,0
100,0	4"	119,5	100,0	50,0	120,0

## Adapter z końcówką do węża (Typ E)

Wykonanie: odlew ze stali 316 [1.4408]. EN10241:2000.

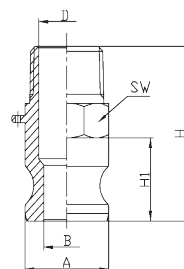
DN	CALE	A mm	B mm	C mm	D mm	E mm	F mm	H1 mm	H mm
15,0	1/2"	24,3	14,4	30,0	8,0	15,0	13,0	35,0	76,0
20,0	3/4"	32,0	21,2	33,0	13,6	20,7	19,4	37,0	87,0
25,0	1"	36,7	23,8	39,0	20,0	27,0	25,8	44,0	104,0
32,0	1 1/4"	45,5	28,6	48,0	25,8	33,9	32,9	51,0	115,0
40,0	1 1/2"	53,4	36,0	56,0	31,3	40,5	38,6	52,0	118,0
50,0	2"	63,0	45,5	66,0	43,8	52,0	51,0	56,0	132,0
65,0	2 1/2"	75,7	55,7	80,0	55,7	66,8	-	64,0	156,0
80,0	3"	91,5	73,2	101,0	68,0	79,0	-	66,0	169,0
100,0	4"	119,5	91,0	130,0	92,0	104,8	-	68,0	180,0



## Adapter z gwintem zewnętrznym (Typ F)

DN	CALE	A mm	B mm	C mm	D mm	H1 mm	H mm
15,0	1/2"	24,3	14,4	14,4	25,0	56,0	25,5
20,0	3/4"	32,0	21,2	21,2	28,0	56,0	33,0
25,0	1"	36,7	23,8	23,8	33,5	69,0	41,0
32,0	1 1/4"	45,5	28,6	33,0	40,0	77,0	48,0
40,0	1 1/2"	53,4	36,0	39,6	42,5	80,0	56,0
50,0	2"	63,0	45,5	50,0	47,5	89,0	65,0
56,0	2 1/2"	75,7	56,4	56,4	50,0	98,0	82,5
80,0	3"	91,5	73,2	77,5	51,0	101,0	95,8
100,0	4"	119,5	100	100	53,0	114,0	124,0

Wykonanie:  
odlew ze stali 316 [1.4408].  
EN10241:2000.  
Gwint wewn BSP wg ISO 7-1R



## Akcesoria pomocnicze (części zamienne) do szybkozłączki

Wykonanie: odlew ze stali 316 [1.4408]



Zestaw dźwigni, blokad i szpilek dostępny do połączeń w zakresie wymiarów od 1/2" do 4"

Uszczelka do szybkozłączy Typ B, C, D i DC wykonana z materiału BUN-A [kauczuku akrylonitrylo- butadienowego]

Dostępne do połączeń w zakresie wymiarów od 1/2" do 4"