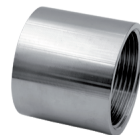
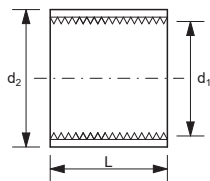


DN	d1	d2 mm	L mm
6	1/8"	14,0	20,0
8	1/4"	17,0	25,0
10	3/8"	21,3	26,0
15	1/2"	26,4	34,0
20	3/4"	31,8	36,0
25	1"	39,5	43,0
32	1 1/4"	48,3	48,0
40	1 1/2"	54,5	48,0
50	2"	66,3	56,0
65	2 1/2"	82,0	66,0
80	3"	95,0	71,0
100	4"	122,0	83,0

333 Mufa gwint wewnętrzny

Wykonanie: odlew lub rura b/szw ze stali 316 [1.4408]
lub 304 [1.4308]. EN10241:2000 [DIN2986].
Gwint BSP wg ISO 228-1G.



* - w celu potwierdzenia wymiarów, prosimy o kontakt z działem handlowym.



ul. Szczawiowa 57 A, 70-010 Szczecin, tel. 91 485 10 50
www.askotech.com.pl, e-mail: szczecin@askotech.com.pl